



DavidJames
the estate agent

Westdale Lane, Carlton, Nottingham, NG4 3NS

Guide Price £300,000

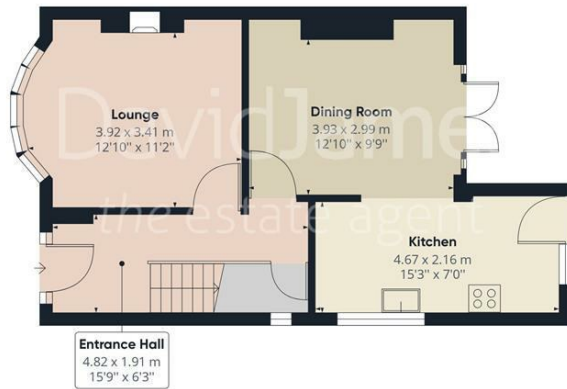
About This Property

GUIDE PRICE £300,000 - £325,000 A beautifully presented 3 bedroom traditional detached house enjoying a corner plot location within reach of Carlton, Mapperley and Gedling's excellent amenities! This wonderful home comprises a welcoming entrance hall with useful understairs storage, lounge with a feature bow window and fireplace as well as a separate dining room with French doors to the garden and an opening through to the fantastic modern kitchen which boasts a full range of integrated appliances which include an electric double oven, hob with extractor, washer/dryer, dishwasher, fridge and freezer as well as a wine chiller. Upstairs, the three bedrooms are complemented by a stunning bathroom fitted with a four piece period-style suite which includes a shower cubicle with twin showerheads and a roll-top bath. The rear garden has been designed with low maintenance in mind and provides a wonderful space for outdoor dining and entertaining, consisting of a paved patio with a decked seating area as well as a pergola and shed to the side of the house. The garden also incorporates a driveway accessed from Hartington Avenue with lock-up double gates. Viewing is essential!

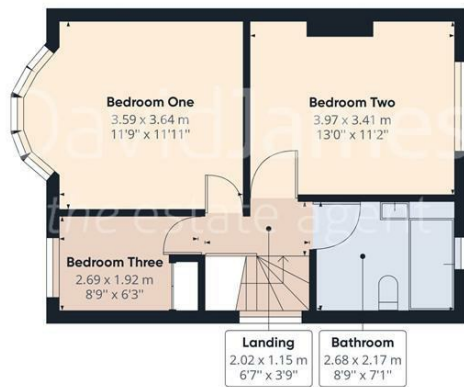
- Immaculately presented traditional detached family home
- 3 bedrooms
- Welcoming entrance hall with useful understairs storage
- Bright and spacious lounge with feature fireplace and bow window
- Separate dining room with French door providing garden access
- Beautiful modern kitchen with a full range of integrated appliances
- Stunning period-style family bathroom with shower cubicle and roll-top bath
- Fantastic low maintenance rear garden
- Gated driveway providing off-street parking
- Highly sought after location with easy reach of excellent local amenities







Floor 0



Floor 1

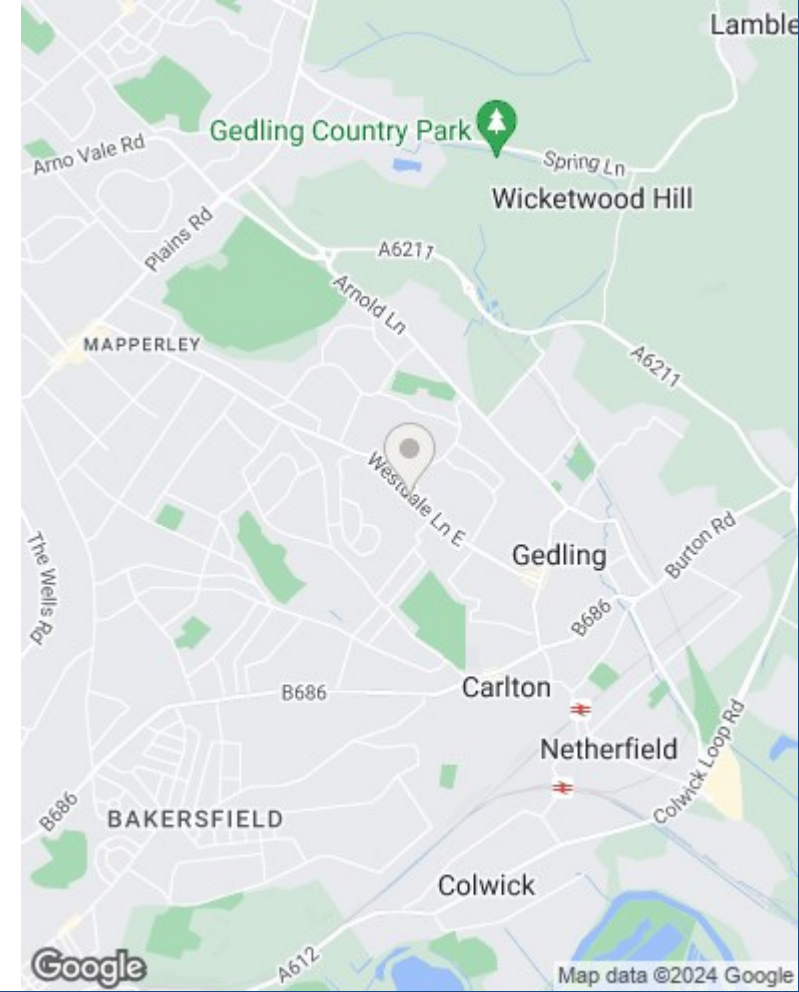


Approximate total area⁽¹⁾
60.70 m²
653.33 ft²

(1) Excluding balconies and terraces

While every attempt has been made to ensure accuracy, all measurements are approximate, not to scale. This floor plan is for illustrative purposes only.

GIRAFFE360



These particulars are produced in good faith, are set out as a general guide only and do not constitute any part of a contract. No person in the employment of David James Estate Agents Ltd has any authority to make any representation whatsoever in relation to the property. All services, together with electrical fittings or fitted appliances have NOT been tested. All the measurements given in the details are approximate. Floor plans are for illustrative purposes only and are not drawn to scale. The position and size of doors, windows, appliances and other features are approximate only. The photographs of this property have been taken with a 10mm wide-angle lens. No responsibility can be accepted for any loss or expense incurred in viewing. If you have a property to sell you may wish to take advantage of our free valuation service. David James Estate Agents have established professional relationships with third-party suppliers for the provision of services to Clients. As remuneration for this professional relationship, the agent receives referral commission from the third-party company. David James Estate Agents receives the following commission from each third party supplier on a per referral basis: W A Barnes Ltd: £60 including VAT. All Moves UK Ltd: 18% including VAT of the invoice total (£107 including VAT average). MoveWithUs Limited: £188 including VAT (average).

Council Tax Band: C
Gedling Borough Council
Freehold

DavidJames
the estate agent

David James Estate Agents
317 Carlton Hill, Nottingham, NG4 1GL
t: 0115 987 8957 e: carlton@david-james.com

